



# APV R5 QUAD- DRIVE SERIES 2 PARAFLOW PHE

PLC-Controlled or Manual-Closing NR5 & R5



# PROCESS EFFICIENCY, RELIABILITY AND INTEGRITY



As the industry leader in heat transfer equipment, APV raises the standard for process efficiency, and reliability once again with the Quad-Drive Series 2 Heat Exchanger.



## R5 Quad-Drive Series 2

Super hygienic/sanitary NR5 plates are ideally suited for a wide range of food processing, dairy, beverage, pharmaceutical and cosmetic applications, offering superior performance under the following conditions:

- Where there is a tendency for the product to foul the heated surface
- Where large temperature-induced viscosity changes are likely to occur
- When processing viscous and non-Newtonian processed foods including stabilizers

### Features and benefits

- **R5-Style Heat Transfer Area Maintains Operating Efficiency.** The .16" (4 mm) average gap permits long run times. At the same time, the R5 style flow geometry maximizes turbulence, self-cleaning and heat transfer.
- **Superior Diagonal Flow Protects Product Integrity.** Most vertical flow plates require an expanded inlet design to achieve adequate flow distribution that can compromise process performance. By contrast, NR5's diagonal flow plates help ensure gentler and more uniform heat treatment along the entire product path.

**APV HEAT EXCHANGERS ARE SOLVING HEAT TRANSFER PROCESS CHALLENGES IN A VAST ARRAY OF INDUSTRIES – such as Dairy, Healthcare / Cosmetics, Food & Beverage**



- **Large Inlet Port Resists Plugging.** NR5 plate's large port entry area easily accommodates products containing small particulates and fibers. Typically 60% to 80% fewer contact points provide superior fiber handling capabilities compared with conventional chevron plates, while facilitating irrigation during Clean-In-Place (CIP) operations.
- **Exclusive Corner Interlock Enhances Alignment.** NR5 plates feature patented corner interlocks that provide unmatched plate-to-plate alignment. This highly effective, metal-to-metal system is stronger and more resistant to damage than plate designs that simply use gasket or edge alignment.
- **Easy Clip Gaskets Simplify Refits.** Patented Easy Clip tabs provide fast and secure adhesive-free gasket retention. Simply align the gasket tabs with the plate and snap the gasket into place. With Easy Clip, gaskets can be fitted and removed time after time as needed without the fear of traditional snap-in clip breakage.
- **Intelligent Frame Design Provides Unmatched Safety and Control.** The patented PLC-controlled powered Quad-Drive Series 2 frame opens and closes at the touch of a button – no tools are required. Intelligent control is flexible and scalable for various applications. For added safety, controls are key protected to limit operator access. Also, a high visibility warning light operates prior to and during follower movement. Should the PLC or screen ever suffer damage, the frame can still be opened hydraulically. In the event of power failure, the frame can be opened and closed manually.

The unit includes a large backlit color LCD touchscreen. The control surface may be ordered on either side of the Paraflow to suit plant layout.

The frame's compact, self-contained design is easy to install and maintain. All plates are easily accessible without removing any components. In addition, automatic closure helps optimize plate and gasket life by eliminating over-compression and uneven compression.

In many cases, an oversize frame may be specified to accommodate future expansion needs if desired. In addition, any frame size may be expanded up to the designed maximum by simply swapping the carry bars and tie bars.

- **Manual Closure.** Ideally suited to applications where infrequent opening is anticipated, a manual frame with quad geared closure is offered. An operator can effortlessly bring the machine close to pitch and then transfer the supplied wrench to the second drive point and close to the final dimension. With synchronous tie bar movement, the follower stays parallel to the head at all times, eliminating uneven compression.

The manual closure unit can be upgraded later to automatic without interruption to daily processing.

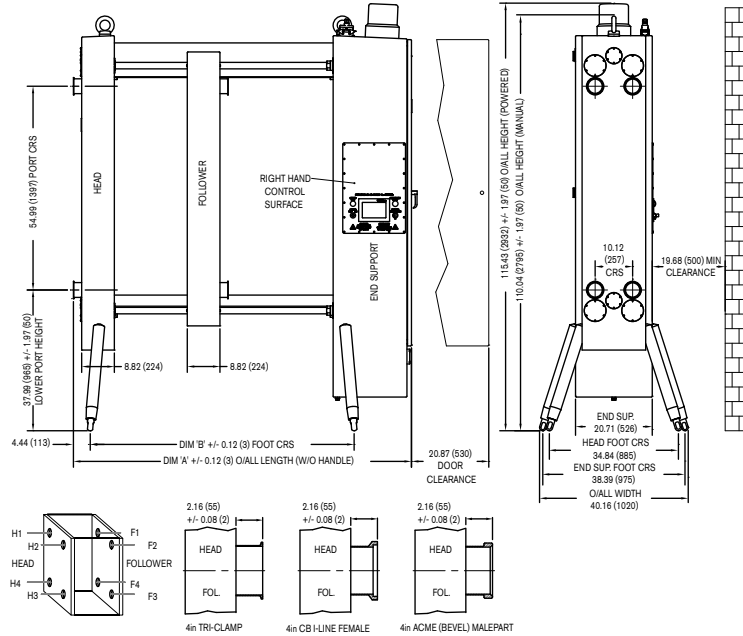
- **Suitable Plate Types.** Quad-Drive Series 2 frames accept standard R5, the super sanitary NR5 and the wide gap ER5 plates. Plates may be mixed in a frame to suit process requirements and only need a grid or divider plate to separate differing types.

## PRODUCT SPECIFICATIONS

<b>Heat Transfer Area/Plate</b>	5.86 ft <sup>2</sup> (0.542 m <sup>2</sup> )
<b>Port Diameter</b>	4.00" (102 mm)
<b>Plate Liquid Capacity/ Fluid Channel</b>	0.54 gal (2.01 L)
<b>Maximum Flow Rate</b>	650 gal/min (147.6 cu. m/h)
<b>Maximum Design Pressure</b>	Up to 225 psi (15.5 bar)
<b>Operating Temperature</b>	Up to 350°F (177°C) depending on gasket material
<b>Plate Materials</b>	Stainless steel 316, Titanium and other corrosion-resistant materials
<b>Gasket Materials</b>	Nitrile, EPDM and FKM
<b>Frame Materials</b>	All stainless steel 304L cladding around ASME SA 516 grade 70 carbon steel core
<b>Frame Finish</b>	#4 polish on head, follower and end support. Glass blasted carrying bars
<b>Frame Sizes</b>	Seven sizes up to 1222 plates (NR5 0.6 mm)
<b>Power Pack</b>	Includes one 5 hp three-phase motor and hydraulic pump; one hydraulic motor and 20 gallon (76 L) integral oil tank (oil Chevron FM ISO 32)
<b>Power Requirements</b>	230 or 460 VAC three-phase, mating connector supplied (other voltages can be special ordered)
<b>Control System</b>	Modular, plug and play, Siemens or Allen Bradley PLC control on left or right hand side of machine
<b>User Interface</b>	Large backlit color LCD touchscreen monitor
<b>Tie Bars</b>	Four chain driven 1.75" (44 mm) ACME tie bars
<b>Connection Positions</b>	Four head, four follower
<b>Connection Types</b>	4" Tri-Clamp™, ACME (bevel seat), CB I-line and plain stub end for welding. Industrial 4" L/T lap joint and weld neck flanges
<b>Options</b>	Stainless steel protective plate pack shroud Grids with up to eight liquid connections Solid divider plate
<b>Codes</b>	Authorized 3-A symbol holder, available as Certified to ASME Sec, VIII, Div. 1



**PRODUCT DIMENSIONS**



Dimensions = in (mm)

**R5 Quad-Drive Series 2**

FRAME SIZE	TOP BAR LEN in (mm)	DIM 'A' in (mm)	DIM 'B' in (mm)	MAX PLATAGE*		FRAME WEIGHT lb (kg)	
				PLATES QTY	DIM in (mm)	POWERED	MANUAL
1	59.06 (1,500)	91.18 (2,316)	71.22 (1,809)	138	32.80 (833)	4,678 (2,122)	4,444 (2,016)
2	98.43 (2,500)	130.55 (3,316)	110.59 (2,809)	305	72.17 (1,833)	4,921 (2,232)	4,687 (2,126)
3	137.80 (3,500)	169.92 (4,316)	149.96 (3,809)	472	111.54 (2,833)	5,161 (2,341)	4,927 (2,235)
4	177.17 (4,500)	209.29 (5,316)	189.33 (4,809)	638	150.91 (3,833)	5,575 (2,529)	5,342 (2,423)
5	216.54 (5,500)	248.66 (6,316)	228.70 (5,809)	805	190.28 (4,833)	5,851 (2,654)	5,617 (2,548)
6	255.91 (6,500)	288.03 (7,316)	268.07 (6,809)	972	229.65 (5,833)	7,447 (3,378)	7,213 (3,272)
7	314.96 (8,000)	347.09 (8,816)	327.13 (8,309)	1222	288.70 (7,333)	8,567 (3,886)	8,333 (3,780)

**FOR YOUR LOCAL REPRESENTATIVE:**

See WHERE TO BUY on [www.spxflow.com/apv](http://www.spxflow.com/apv)



SPX FLOW, Inc. reserves the right to incorporate our latest design and material changes without notice or obligation. Design features, materials of construction and dimensional data, as described in this bulletin, are provided for your information only and should not be relied upon unless confirmed in writing. Please contact your local sales representative for product availability in your region. The green “>” is a trademark of SPX FLOW, Inc. For more information, visit [www.spxflow.com](http://www.spxflow.com).