

## DELTA UF/UFR



To protect installations against excess pressure APV is offering the DELTA UF/UFR relief valves. The valves have been developed in a way, that if the set pressure is exceeded, the valves open and if the value drops more than 20% of the set point, the valves close.

### CHARACTERISTICS

With the DELTA UF spring loaded valves the set pressure is adjusted, corrected or changed using the setting screw. This setting can be checked at any time with a pressure gauge. If the pressure is to be kept constant – closing pressure = response pressure - the DELTA UFR relief valve with modulating cone should be used.

### TECHNICAL DATA

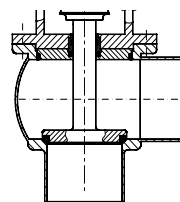
SIZES	ISO 1" – 4" AND DN25 – DN100
PRODUCT WETTED PARTS	1.4404 / AISI 316LSI 316L
NON-PRODUCT WETTED PARTS	1.4301 / AISI 304
SEAL MATERIALS REQUIREMENTS	EPDM, FPM, Silicone All seals comply with the FDA
MAX. TEMPERATURE	EPDM / HNBR 275°F / 135°C (short time 284°F / 140°C) VMQ 275°F / 135°C not to be used for hot water FPM 275°F / 135°C not to be used for steam
SURFACES	Internal finish: Ground Ra<64 µin. (Ra <1.6 µm) External finish: Glass blasted
PRESSURE RANGE	DELTA UF DN25/1" - DN80/3": 0-145 psi (0 - 10 bar) DN100/4": 0-120 psi (0 - 8.3 bar) DELTA UFR DN25/1" - DN80/3": 0-145 psi (0 - 10 bar) DN100/4": 0-112 psi (0 - 7.7 bar)

### FEATURES AND BENEFITS

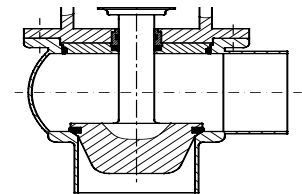
- Ball shaped valve body with smooth passages, i.e. no sump and dome, enabling optimum cleaning
- Seat lifting actuator with feed-back switches in the yoke
- No stroke limitation by the seat lift actuator and thus full opening cross section available during cleaning
- Profile seals with identification and 3-A certification
- Metallic stop as protection against wear of seat

### SIMPLE MAINTENANCE

The DELTA UF/UFR is particularly easy to service. Only 4 bolts to be loosened and the valve insert can be lifted out. The valve only has a few gaskets and to ensure a quick and safe mounting of the seat seal an assembling tool is available. Furthermore, the seat lift actuator is maintenance free.



DELTA UF



DELTA UFR relief valve with modulating cone to keep the pressure constant.

Based in Charlotte, North Carolina, SPX FLOW, Inc. (NYSE: FLOW) is a multi-industry manufacturing leader. For more information, please visit [www.spxflow.com](http://www.spxflow.com)